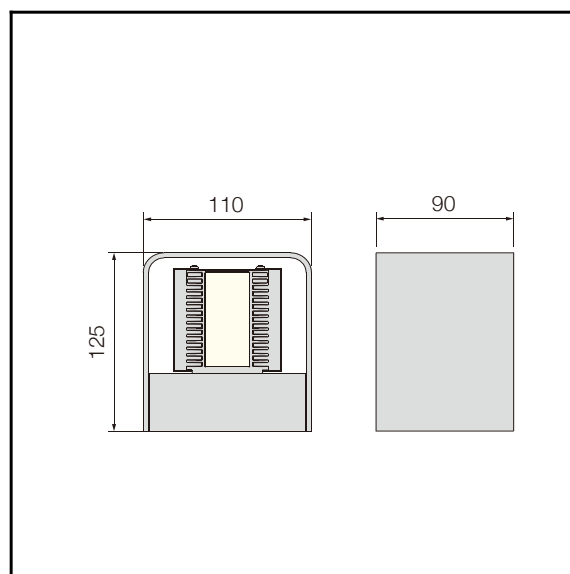


The photograph may not match the reference exactly. Please read the product description to identify the finish.



**B-11**

**TECHNICAL CHARACTERISTICS**

Product Model:	B-11
IP Protection degrees:	IP65
IK Protection degrees:	IK06
Light source:	24 x SMD 2835
Total power consumption:	10W
Luminous Flux:	600Lm
Luminous efficiency:	60Lm/w
Color temperature:	4000K as standard. Optinal 2700K,3000K & 5700K. Amber LED available
Voltage/Frequency:	100-240V/50-60Hz
Warranty(Years):	3
Units per box:	4
Net Weight(Kg)	1.1



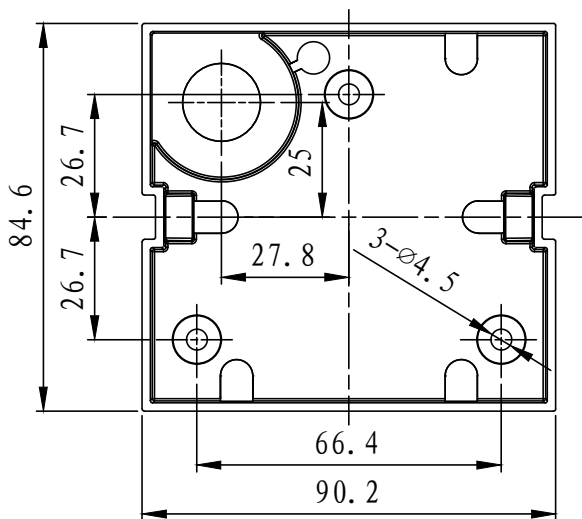
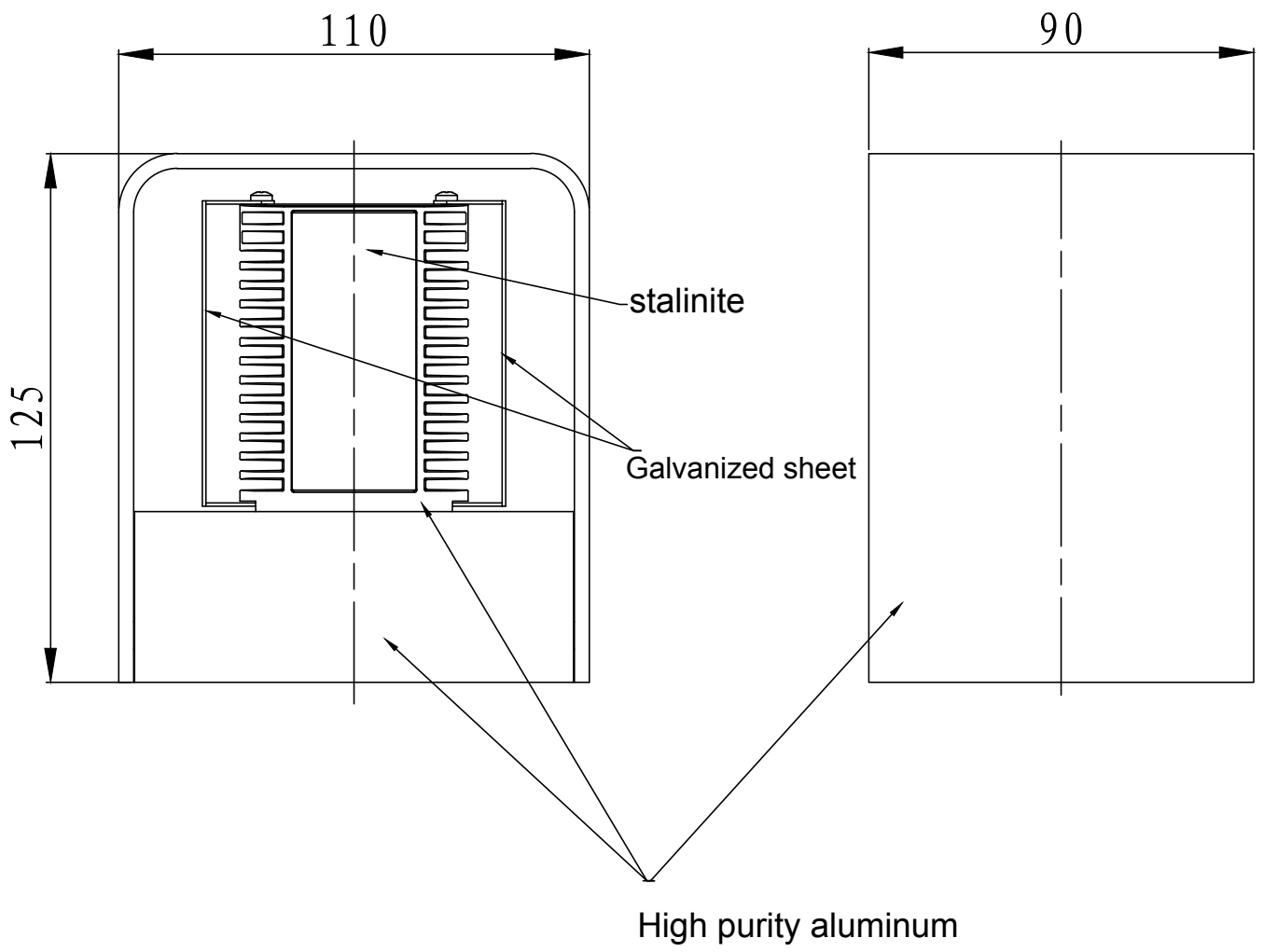
**MATERIALS / FINISHES**

<b>Structure material:</b> High purity aluminium	<b>aiffuser material:</b> stalinite
<b>Structure finish:</b> Black	<b>Diffuser finish:</b> Matt

**GEAR**

Multi-voltage electronic gear included (110-240 V / 50-60 Hz)

Lm<sup>(N)</sup>: Nominal flow of light in actual working conditions. Its actual flow will depend on the environmental conditions and the efficiency of the optics and/or diffuser.



Installation template