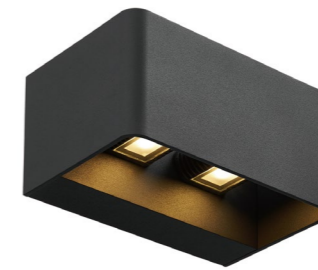
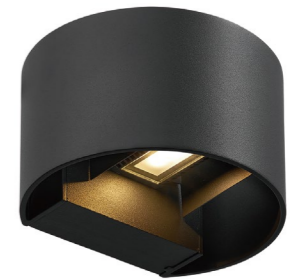


**B-11**  
9W



**B-11D**  
9W\*2



**B-11R**  
9W

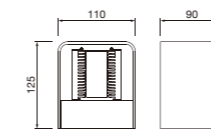
简述 Description



- 灯具外壳采用铝合金压铸成型，铝型材装饰盖
- 模组式光源模块，灯具出光角度可调
- 防紫外线聚氨酯塑料喷涂表面，耐腐蚀可以达1000小时以上
- 无生物蓝光危害风险，符合EN62471: 2008 标准
- 灯具表面最高温度不超过50度，安全可靠

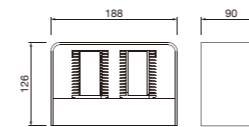
- The lighting body made by die-casting aluminium, extruded aluminium cover.
- LED module is used inside, and the light angle can adjustable.
- Surface anti-ultraviolet pure polyester powder painting, Corrosion resistance can be more than 1000 hours.
- No photo-biological risk, in accordance with EN 62471:2008.
- The maximum surface temperature of all accessible part under 50 degrees for safety and reliable.

技术参数 Technology data



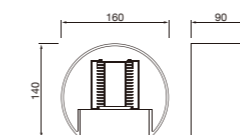
**B-11**

Code	Power	LED Qty	Input Voltage	Lumen	Beam Angle	Packing Size	Pcs/Box
LED chips - 2835							
<b>B-11LED9-24B</b>	9W	<b>12*2</b>	100V-240V	750	100°	265*175*230	4



**B-11D**

Code	Power	LED Qty	Input Voltage	Lumen	Beam Angle	Packing Size	Pcs/Box
LED chips - 2835							
<b>B-11DLED18-48B</b>	18W	<b>12*4</b>	100V-240V	1500	100°	295*225*225	4



**B-11R**

Code	Power	LED Qty	Input Voltage	Lumen	Beam Angle	Packing Size	Pcs/Box
LED chips - 2835							
<b>B-11RLED9-24B</b>	9W	<b>12*2</b>	100V-240V	750	100°	365*190*230	4