



M-09 Series

KLED

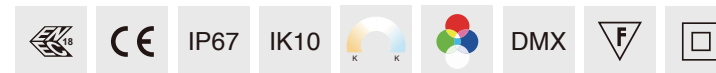


单色白光
Monochromatic White: DMX



RGBW变色
RGBW: DMX

简述 Description



- 挤出铝型材灯体，铝压铸端盖配高温硅胶密封条
- 304不锈钢装饰面板和预埋件底座，灯具静态可承载超过5000kg
- 超白丝印钢化玻璃，具有高视觉舒适性和均匀配光
- 多种光学组件可选，适用于不同要求照明场合
- 灯具表面最高温度不超过50℃，安全可靠
- 所有外部螺钉均为304不锈钢材质
- 灯具符合EN60598-1技术标准要求

功率: 30W / 75W / 100W
光效: 100-110 Lm/W (Ra80)
色温: 2700K / 3000K / 4000K
输入电压: DC 24V
功能选项: Switch / DMX

- Extruded aluminium body, die-casting side cover which complete with silicone gaskets.
- 304 stainless steel decorative panel and install housing box, the static load of the luminaire can resistance 5000kg.
- Super white tempered glass, with high visual comfort and uniform lighting distribution.
- Multiple optics be options, suitable for lighting requirements in different applications.
- The maximum surface temperature of all contact temperature <50°C for safety and reliable.
- All external screw are made of 304 stainless steel.
- The luminaire technical characteristics conform to EN60598-1 standards.

Power: 30W / 75W / 100W
Nominal efficacy: 100-110 Lm/W (Ra80)
CCT: 2700K / 3000K / 4000K
Input voltage: DC 24V
Options: Switch / DMX

- **应用场合:** 广场、建筑物、雕塑、标志物、广告牌等景观照明场所
- **Applications:** For landscape lighting places such as square, buildings, sculptures, signs and billboards.

规格选项 Flexibility

此洗墙灯有三个主要尺寸规格，包括单色白光和彩色混光（RGB，RGBW），对于相同长度的灯具，可灵活选择不同光学配件，为每个照明设计方案提供优异的性能和最大的灵活性

This kind of linear is available in 3 main lengths with LED monochrome white and colour light, and each linear has some optical options for wall washing, it provide exceptional performance and maximum flexibility for every lighting design solution.



L=550mm / P=30W



L=1040mm / P=75W



L=1520mm / P=100W

光学配件 Optical accessories

灯具拥有多款光学配件可选用，为视觉舒适性提供最有效的照明解决方案，避免不必要的眩光并减少光污染

The design has a variety of optical accessories to option, providing the most effective lighting solution for visual comfort, avoiding unnecessary glare and reducing light pollution.



Normally Type

装饰板 Decorative plate



"A" Type

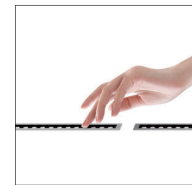
蜂窝板 Honeycomb louvre



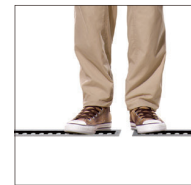
安全性能 Safety performance

装在地面或地板的嵌入式灯具符合标准防滑和抗压要求，触碰灯具表面温度控制在安全标准之内

Ground and floor level recessed luminaires, have different degrees of resistance to torsion and shear, up to 5000 Kg in accordance with EN 60598-2-13.



Temperature < 40° C

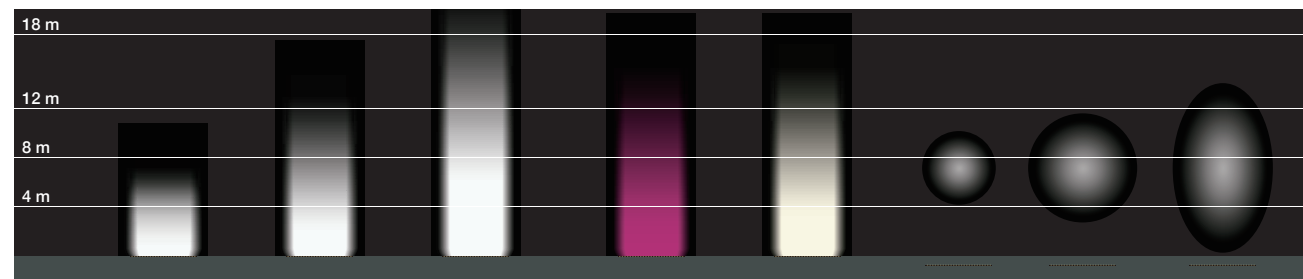


Diffuser optics versions complete with non-slip glass



Resistance to static load (5000 Kg)

出光效果 Lighting effects

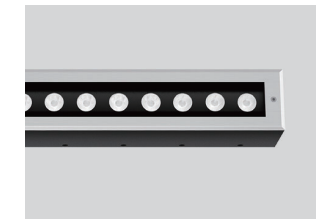


TS4

TS15

TE13 / 10x30°

技术参数 Technology data

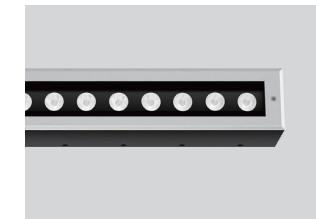


M-09XL

Code	Power	LED Qty	Control Options	Input Voltage	Optics	Packing Size	Weight
LED chips - 3535/5050							
M-09LED100-27L150	100W	27	Switch / DMX	DC 24V	TS4/TS15/TE13	1545*240*145/2pcs	31
M-09ALED100-27L150	100W	27	Switch / DMX	DC 24V	TS4/TS15/TE13	1545*240*145/2pcs	31

LED chips - RGBW

M-09LED100-27RGBWL150	100W	27	DMX	DC 24V	TS4/TS15/TE13	1545*240*145/2pcs	31
M-09ALED100-27RGBWL150	100W	27	DMX	DC 24V	TS4/TS15/TE13	1545*240*145/2pcs	31

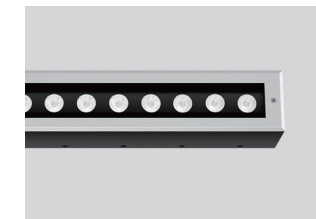


M-09L

Code	Power	LED Qty	Control Options	Input Voltage	Optics	Packing Size	Weight
LED chips - 3535/5050							
M-09LED75-18L100	75W	18	Switch / DMX	DC 24V	TS4/TS15/TE13	1065*240*145/2pcs	21
M-09ALED75-18L100	75W	18	Switch / DMX	DC 24V	TS4/TS15/TE13	1065*240*145/2pcs	21

LED chips - RGBW

M-09LED75-18RGBWL100	75W	18	DMX	DC 24V	TS4/TS15/TE13	1065*240*145/2pcs	21
M-09ALED75-18RGBWL100	75W	18	DMX	DC 24V	TS4/TS15/TE13	1065*240*145/2pcs	21



M-09S

Code	Power	LED Qty	Control Options	Input Voltage	Optics	Packing Size	Weight
LED chips - 3535/5050							
M-09LED30-9L55	30W	9	Switch / DMX	DC 24V	TS4/TS15/TE13	575*270*245/4pcs	22
M-09ALED30-9L55	30W	9	Switch / DMX	DC 24V	TS4/TS15/TE13	575*270*245/4pcs	22

LED chips - RGBW

M-09LED30-9RGBWL55	30W	9	DMX	DC 24V	TS4/TS15/TE13	575*270*245/4pcs	22
M-09ALED30-9RGBWL55	30W	9	DMX	DC 24V	TS4/TS15/TE13	575*270*245/4pcs	22

